

# **Killer whale photo-identification catalogue**

Southern Chile

Effort from Patagonian toothfish fishing vessels

**TRIP 2017-1 Global Pesca I**

Created May 14<sup>th</sup> 2017

Author: Paul TIXIER

Deakin University – Melbourne, Australia

As part of the 2017-2018 COLTO study on whale depredation

## Trip of GLOBAL PESCA I – 2017\_1

9/01/2017 – 13/04/2017

Pictures taken by: **IFOP Observer**

Camera: **Canon EOS Rebel T6**

Lens: **70-300mm**

Number of sets with pictures: **12**

Number of pictures: **624**

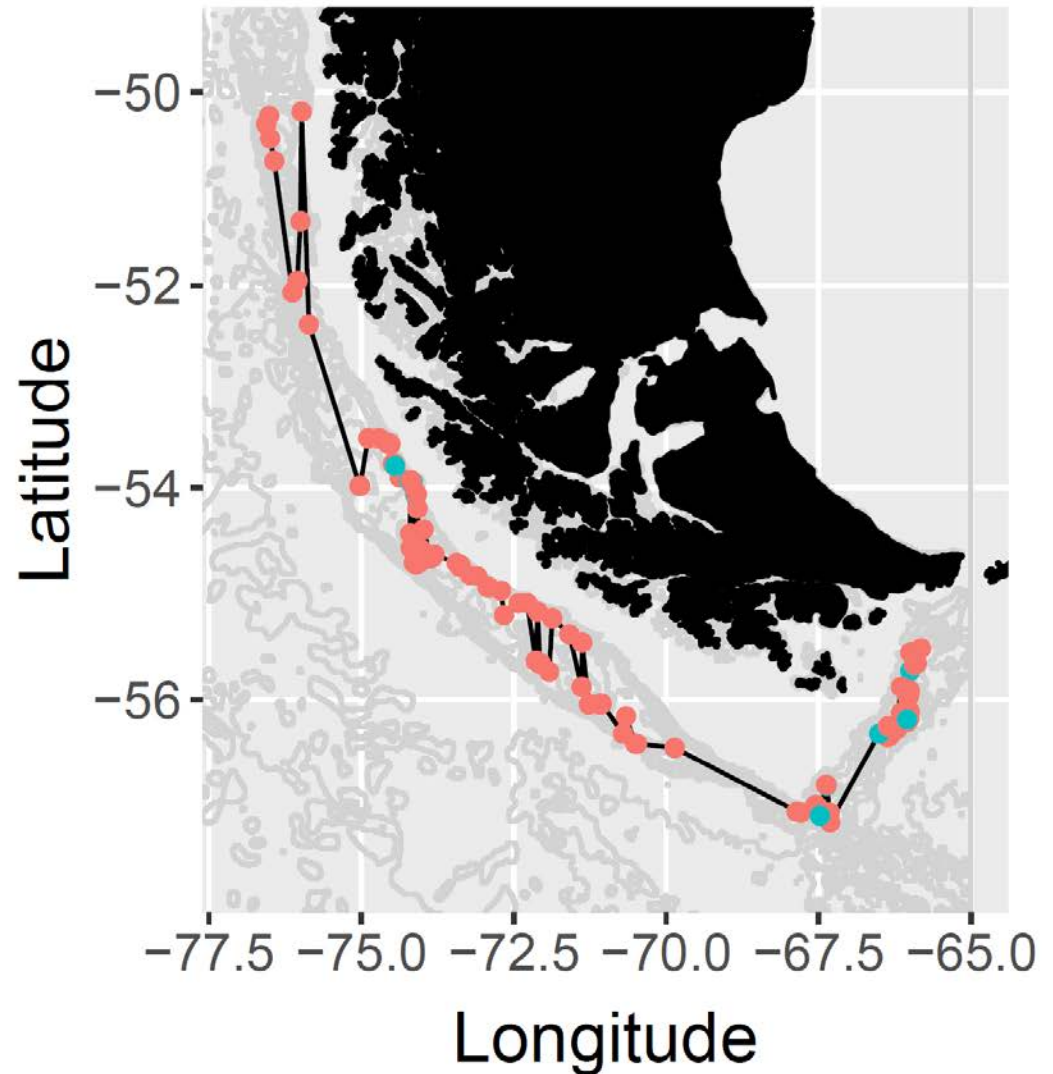
Mean number of pictures per set: **52**

Number of individuals photographed: **26**

Number with iD given: **24**

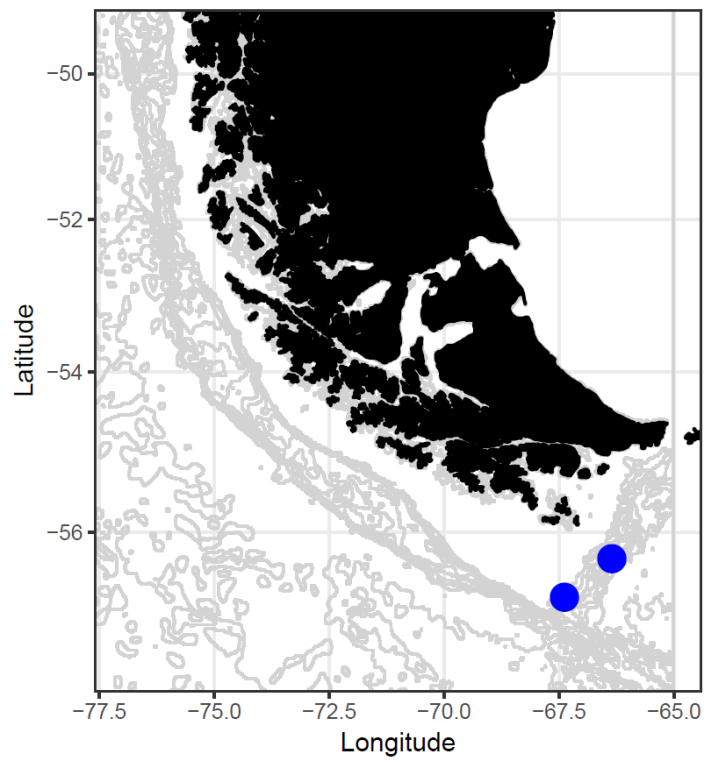
Number of adult males: **3**

Number of newborns (<2 yrs old): **2**



- 0 Sets without photo-ID effort
- 1 Sets with presence of killer whales and photo-ID effort

# CH001



CH001



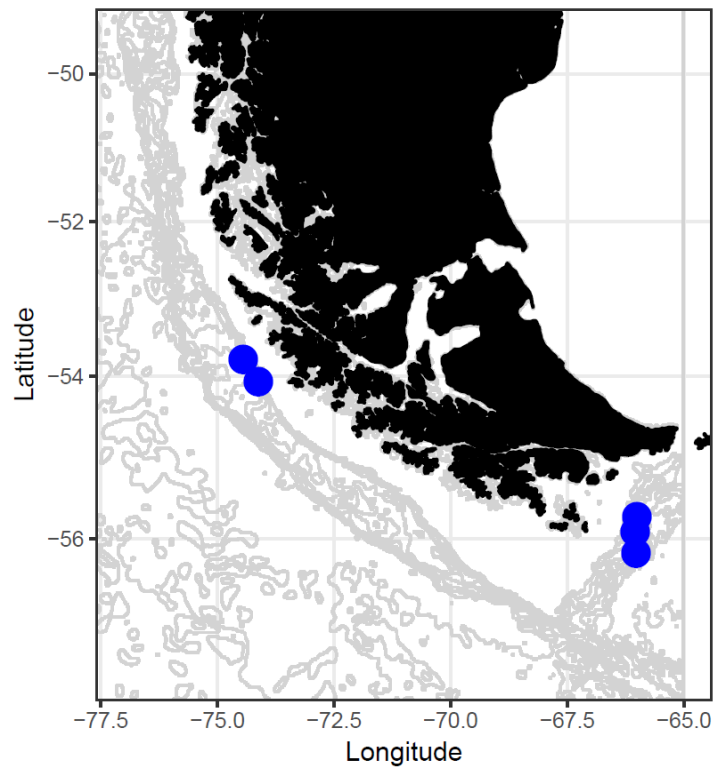
CH002



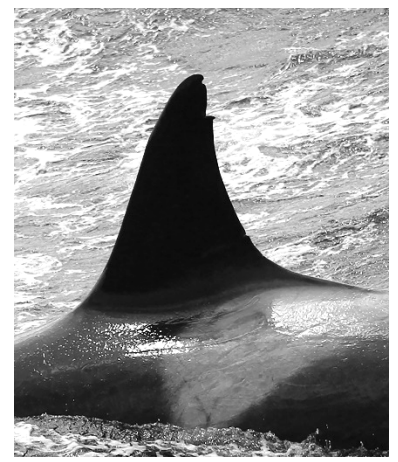
CH003



# CH004



CH004



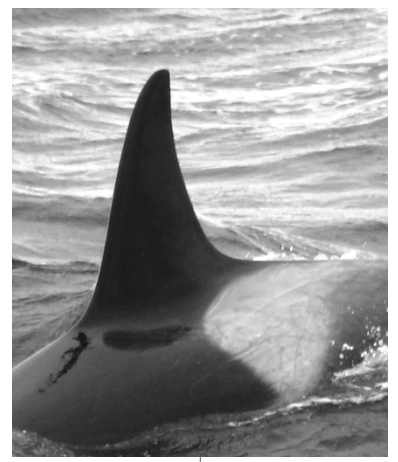
CH005



CH006



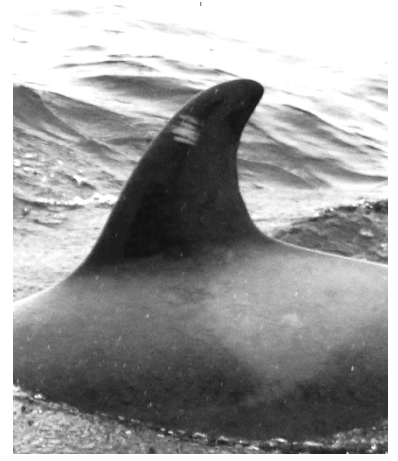
CH008



CH007

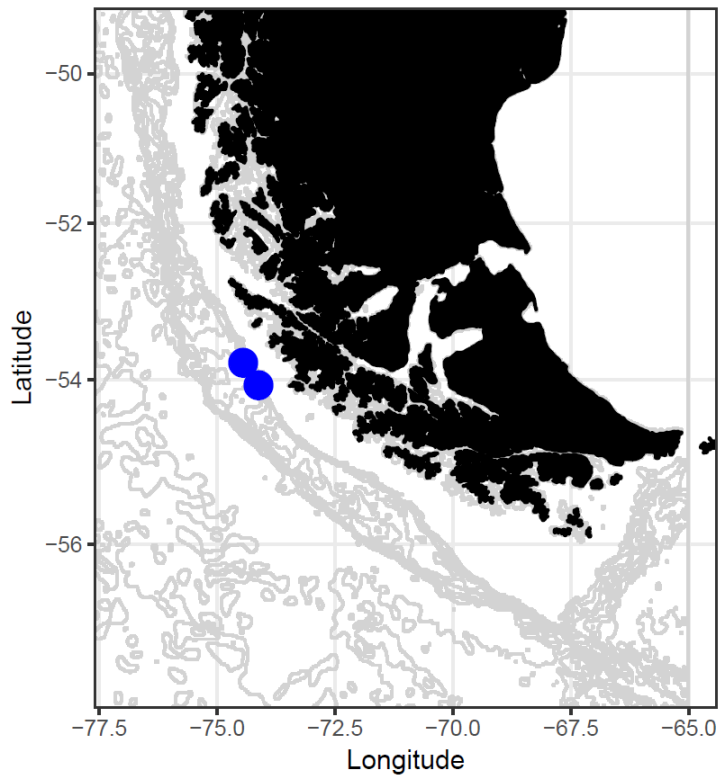


CH022



\* More pictures needed for ID

# CH009



CH009



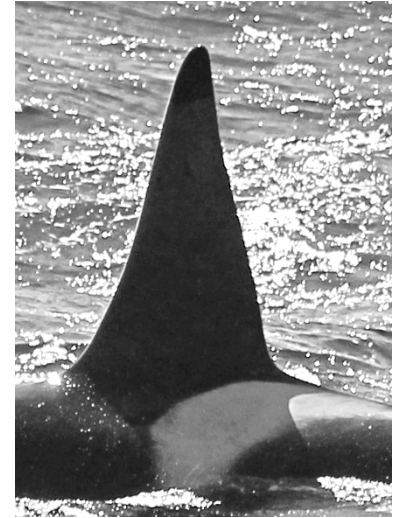
CH010



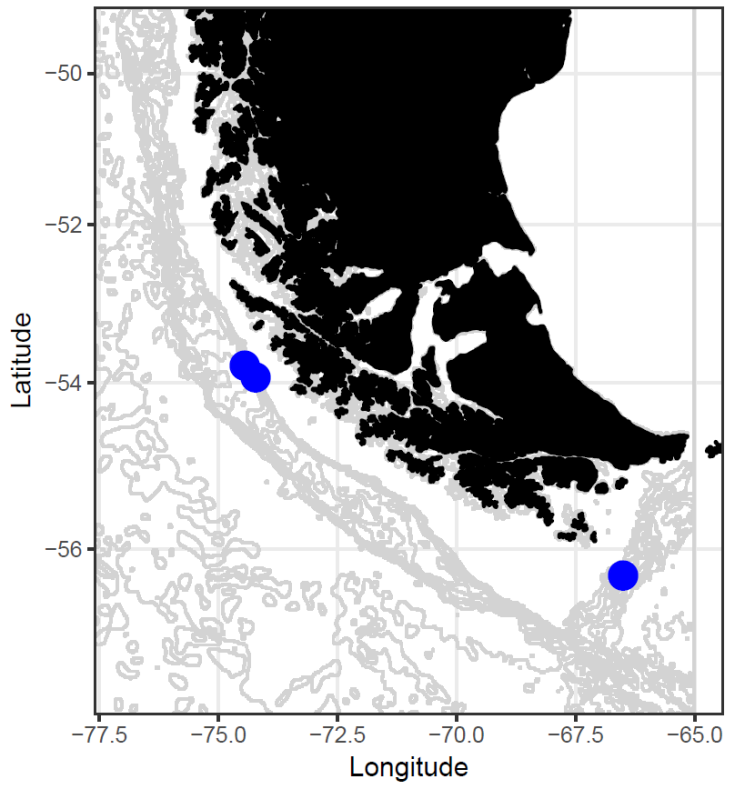
CH011



CH023



# CH012



CH012



CH013



CH014



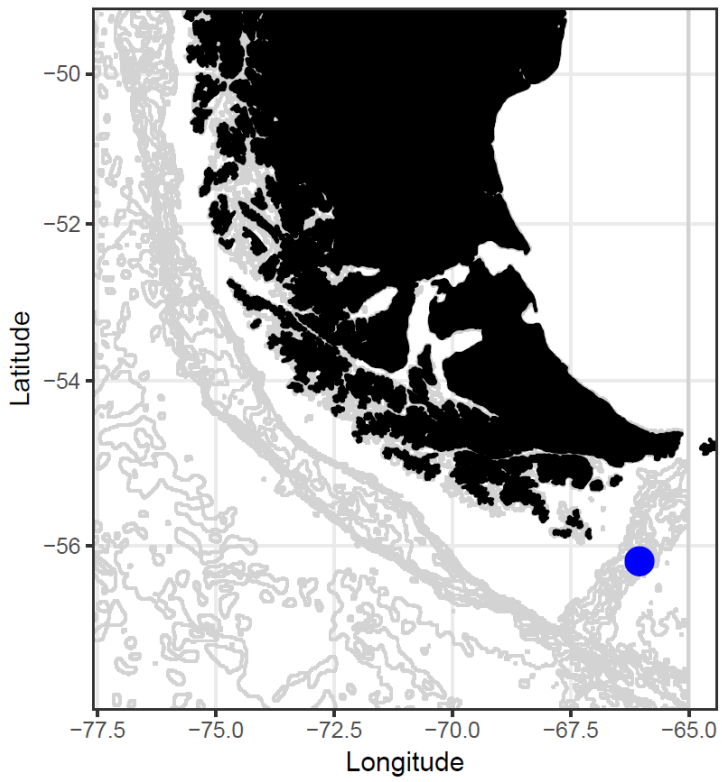
CH015



CH016



# CH019



CH017



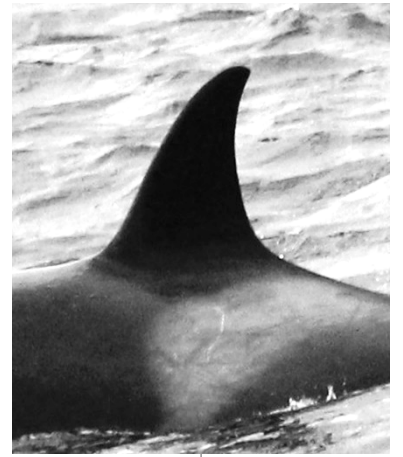
CH018



CH019



CH024



CH020



*\* More pictures needed for ID*

# CH021

CH021

